

The RCI Line of Equipment

RCI offers its own line of Hay & Forage and Custom Research Plot equipment. These products were developed by RCI Engineering to provide simple, cost-effective solutions for specific market segments.

Hay and Forage Equipment

RCI manufactures a short line of attachments and implements of hay and forage equipment.

These include:

- 186M Merger Implement
- 316M Merger Attachment
- 812A Combine Adapter



The RCI 186M Merger combines windrows of crop together in preparation for harvest or invert the crop to improve drydown prior to harvest.

Research Plot Equipment

RCI can develop a custom plot equipment solution for each customer's specific needs. RCI has several existing platforms to build to your exact needs and can develop new platforms as needed.

For complete machines, RCI offers its own line of equipment for hay, forage, and biomass research plots.

These include:

- 36A Research Plot Harvester
- 48A Research Plot Harvester
- 30A Plot Harvester Sampler
- 130S Research Plot Sampler



The RCI line of Research Plot Equipment provides for the harvest and sampling of a variety of crops in various conditions.



The RCI 316M is available for the John Deere W200 Series (rotary traction unit) self-propelled windrower with a 16 ft. (4.9 m) 995 or 14 ft. 6 in. (4.5 m) 994 Rotary Platform head.

These products allow the harvest of plots while recording necessary data using RCI's PlotPro software. RCI also integrates various NIR sensors to plot harvesters for the recording of constituents based on customer needs.

Contact RCI today for your product development, manufacturing, and specialty equipment needs!

Call us toll free at 888-472-4552 or visit our website at rciengineering.com.



From a start-up on a family farm in 2005 to the current facility today, RCI has experienced tremendous growth in product offering and size. RCI continues to follow the company motto of "Keep Moving Forward" through innovative new products and growing with customer needs and expectations.

©2016 RCI Engineering LLC. All rights reserved. Any trademarks referred to within, in association with goods and/or services of companies other than RCI Engineering LLC, are the property of those respective companies. RCI Engineering LLC reserves the right to make improvements in design and changes in specifications at any time without notice and without incurring any obligation to install them on units previously manufactured or sold. Specifications, descriptions, and illustrative material herein are as accurate as known at time of publication, but are subject to change without notice.

RCI Engineering

Product Development and Manufacturing Services for Agricultural and Off-Road Equipment

- Complete Product Engineering Services
- Custom Machine Development
- Contract Manufacturing for Low-Volume and Specialty Markets



KEEP MOVING FORWARD



208 River Knoll Drive
Mayville, WI 53050
Phone: 888-472-4552
Fax: 920-387-9806

See us on
Facebook,
Linked In,
Twitter and
You Tube



Engineering Services

Product Development

RCI Engineering offers complete product development services. RCI has the knowledge and experience to assist with any and all phases of product development, from concept to end of production, or any portion in between.



Product Design

RCI specializes in engineering equipment for hay, forage, biomass, off-road, and specialty agricultural applications. From complete self-propelled machines to small update bundles, RCI can engineer the product to fit your needs.



Prototype Fabrication

RCI Engineering utilizes rapid prototyping techniques and technology, including 3D printing and rapid fabrication to move the product from concept to prototype quickly and accurately, regardless of machine size.



Product Testing

RCI Engineering has the experience required to fulfill almost any testing protocol. RCI can provide testing on-site or at our facility. RCI has experience with cold room, engine/dynamometer, structural, vibration, FEA, HDRS and safety testing.

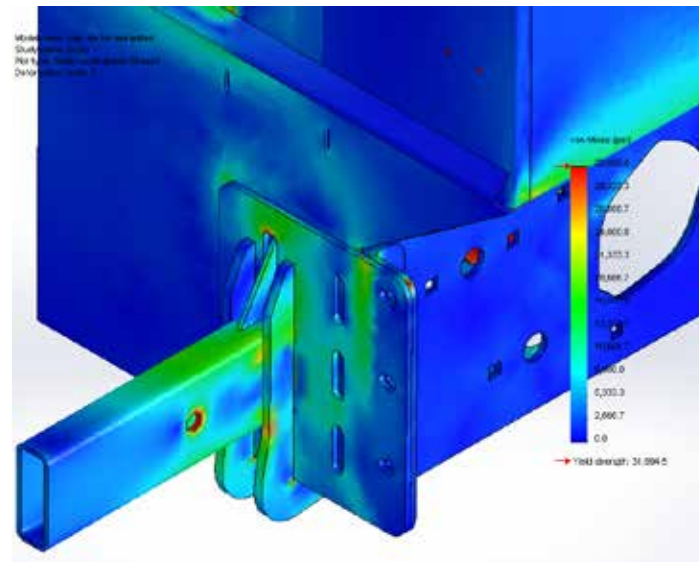
RCI can also conduct bump track testing and destructive testing on our own test track, replicating real life conditions in a controlled environment.

If data logging is required, RCI offers eDaq data loggers with up to 120 simultaneous channels to collect all required test data.



Product Design Reviews

RCI provides reviews on product design in the areas of Function, Safety, Durability, Reliability, Manufacturability, Serviceability, Lighting, Marking, and Homologation.



Electrical Engineering

Wire harness development, vehicle programming, interfacing to other systems, software development and PLC programming are available through RCI Engineering. We can develop the entire electrical and software platform for every machine we develop, in house, turn-key.



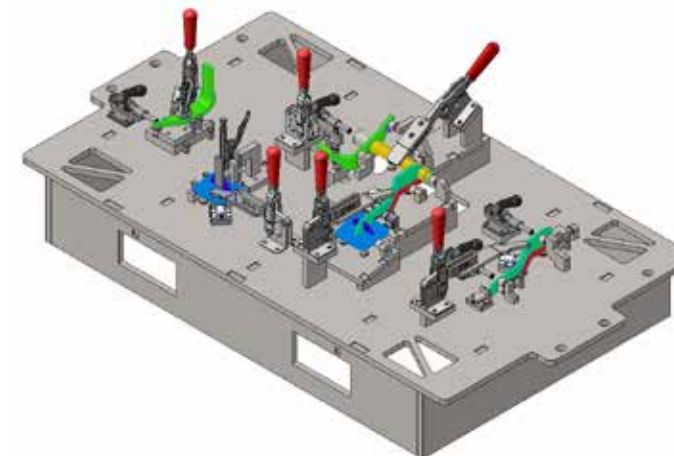
Technical Publications

RCI develops all necessary product information, such as Operator Manuals, Repair Manuals, Technical Manuals and Parts Catalogs.



Production Engineering

RCI develops production fixturing, including robotic and manual welding, light assembly tooling, heavy assembly rigging, and any other prototype or production needs.



Manufacturing

RCI's manufacturing specialty is in low volumes, from one to a few hundred at a time. From small kits to complete self-propelled machines, RCI has a solution for your manufacturing needs. From bare parts to complete machine assembly, we can do it all.



Product Support

We pride ourselves on exemplary product support, from pre-production units and prototypes, to production and aftermarket support. RCI offers after-hours and in-field support during critical operating windows as needed to help reach your goals and aid in continuous improvement.

